

# OS WORKSTATION

The *Lixi* workstation utilizes real-time x-ray to provide a cost effective solution for a variety of inspection needs. Lixi's system features a mobile cabinet for ultimate portability within your facility, while providing the operator with a high degree of safety. Simple image processing software is available, allowing the user to pre and post process, capture, archive and retrieve images. Whether used for manufacturing process validation or for ad-hoc inspection of components and assemblies, the Lixi workstation is a productivity tool which will find everyday use.

This system is the ideal choice for manufacturers to introduce x-ray imaging technology into their processes. Ease-of-use, safety, portability, and reliability have all been designed and built into the unit. The Lixi workstation system allows many contract manufacturers to bid on and obtain BGA placement contracts that they could not otherwise obtain. Initial process fine-tuning is supported through the use of the Lixi workstation. Lixi offers an x-ray imaging solution which won't break the bank and won't take over your plant.

## FEATURES:

- 22 to 50kV x-ray source
- 50 micron focal spot
- 10W maximum power
- Analog kV & mA control with digital displays
- Computer based image processing
- 15" LCD monitor
- 25mm and 50mm field of view
- 10 to 12 lp/mm resolution at 1:1
- Manual sample manipulation
- 10" x 12" scan area
- Fully shielded & interlocked inspection cabinet
- Stainless steel inspection table
- System dimensions: 30"D x 30"W x 35"H



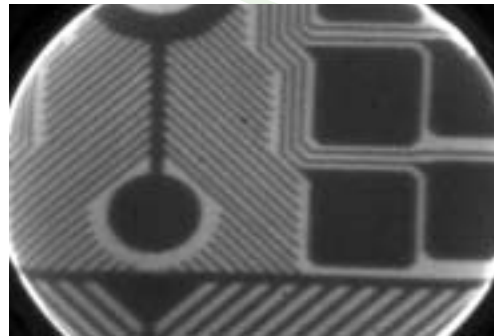
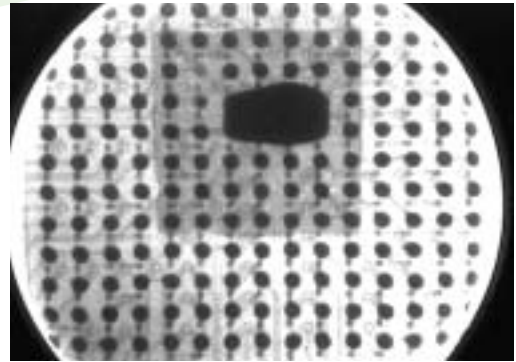
**EXAMPLE PARTS THAT CAN BE IMAGED:**

- BGA
- PLCC
- SOIC
- QFP
- Flip chips
- Capacitors
- Resistors
- Connectors
- Bond wires

**APPLICATIONS:**

- Circuit board registration
- Voids in die bonds
- Bridges
- Misalignment
- Shorts/Opens
- Soldering integrity
- Cracks

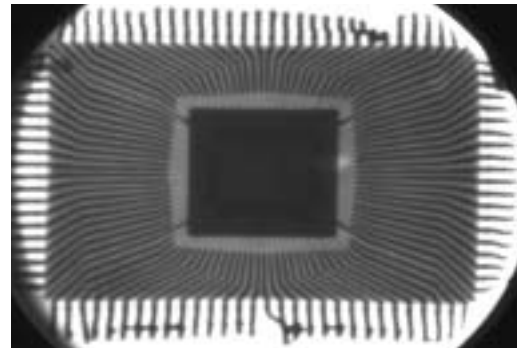
Missing solder ball on standard BGA.



Traces on a flex circuit.



Lixi's 'pizza paddle' allows the operator to position parts quickly, easily and accurately.



Damaged leads and solder bridging on QFP.



Lixi, Inc. 11980 Oak Creek Parkway, Huntley IL 60142  
P 847 961 6666 F 847 961 6667  
[www.lixi.com](http://www.lixi.com)